

SIMSAM



The National SIMSAM Network, the Umeå SIMSAM Network and Register-based Research

Anna Holmström PhD
SIMSAM Network Coordinator
Dept. of Public Health and Clinical Medicine
Unit of Epidemiology and Public Health
Umeå University

UCMR Day January 12, 2012

Overview

- Swedish registry data
- Swedish Research Council (VR): call + funding
- The national SIMSAM network
- The Umeå SIMSAM network

Swedish registry data - a gold mine



Disease Illness Well-being Education Work/Income Housing

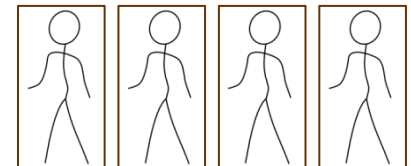
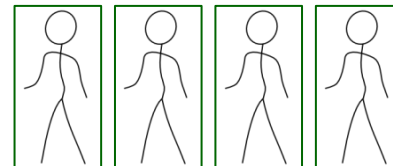
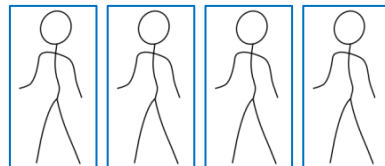
Health and welfare : life-course perspective

Life domains:

Family

Neighbourhood

Working life



VR: 27 million SEK/year, Dec. 2008 - Nov. 2013

- New generation of researchers and research leaders
- World-class research: population based registers
- Viable research environments + scientific added value
- PhD studies in new areas + recruitment to growing research fields
- Interdisciplinary research
- National + international collaborations



SIMSAM Organisation

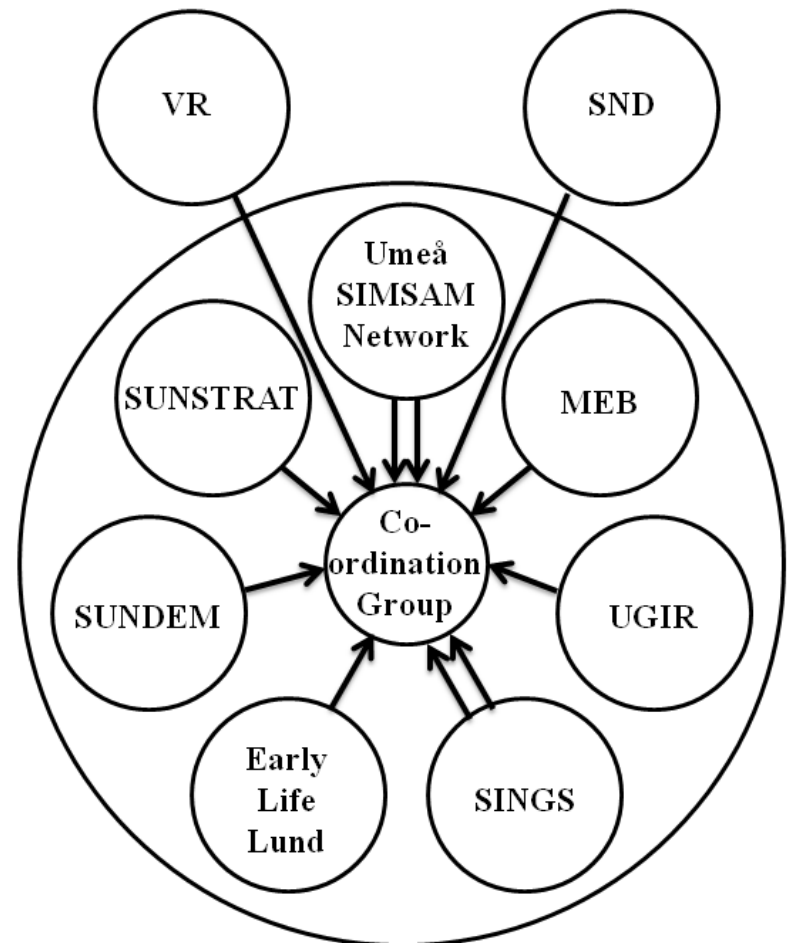
➤ Network: six research nodes and a graduate school (SINGS)

- Karolinska Institutet (KI) 2 nodes
SINGS
- Stockholm University (SU) 2 nodes
- Lund University (LU) 1 node
- Umeå University (UmU) 1 node

➤ National coordination group

➤ Umeå node - coordinating role

➤ National coordinator 50%



The National SIMSAM Network

SIMSAM Early Life Lund

Interdisciplinary research on early life exposure and health.

The SIMSAM MEB node (KI)

Transmitted and acquired determinants of health across the life-span.

The SUNDEM node (SU)

Register-based research in Nordic Demography.

The SUNSTRAT node (SU)

Social Stratification dynamics.

The Umeå SIMSAM Network

Microdata research on childhood for lifelong health and welfare.

Upper Gastrointestinal Research (UGIR) (KI)

Register-based research of diseases and surgery of the upper gastrointestinal tract.

SINGS (KI)

Swedish INterdisciplinary Graduate School in register-based research.



SIMSAM Vision

To create a world leading research community for register-based research for health and welfare

SIMSAM



Swedish Initiative for Research on **M**icrodata in the **S**ocial **A**nd **M**edical Sciences

Research areas of interest to UCMR?

- Fetal exposure to environmental pollutants, infections => cancer?
 - Early life exposure to antibiotics => allergy, asthma, T1DM?
 - Factors => obesity + cardiovascular morbidity?
 - Genetic + non-genetic contribution to cardiovascular disease?
 - Familial cancer
 - Neurological disorders
 - Psychological stress – health consequences
 - Upper gastrointestinal disease
 - Asthma
 - Allergy
 - Coeliac disease
 - Diabetes
 - Psoriasis
- } Umeå-specific

SIMSAM



- [Home](#)
- [Events](#)
- [About SIMSAM](#)
- [Network nodes](#)
- [SINGS graduate school](#)
- [Contacts](#)
- [Links](#)
- [På svenska](#)
- [Sitemap](#)

Home/News

News posts

[European Population Conference, Stockholm, June 13-16 \(2012\)](#)

2011/12/15

[SIMSAM will be presented at Umeå University](#)

2011/12/15

[SIMSAM activities described in SVEPET](#)

2011/12/15

[simsam.nu is now live](#)

2011/12/15

SIMSAM is short for for "**S**wedish **I**nitiative for **R**esearch on **M**icrodata in the **S**ocial **A**nd **M**edical Sciences", an initiative supported by the Swedish Research Council via its Committee for Research Infrastructure. By giving priority to interdisciplinary, innovative register-based research, SIMSAM will contribute to better public health and increased knowledge of social issues, for instance which factors in childhood that result in increased risk for obesity or cancer later in life. The initiative is also intended to promote improved and expanded use of registers in research and to increase the knowledge of how registry research is organized in Sweden and internationally. Six research nodes and one graduate school have been granted funding for five years from december 2008 until november 2013.

EVENTS

- FEB**
2
Thu
10:00 National SIMSAM Coordination Group Meeting
- MAR**
1
Thu
10:00 National SIMSAM Coordination Group Meeting
- APR**
19
Thu
13:00 SIMSAM national workshop in Stockholm
17:30 National SIMSAM Coordination Group Meeting
- JUN**
1
Fri
10:00 National SIMSAM Coordination Group Meeting

[View Calendar »](#)

Umeå SIMSAM Network Core

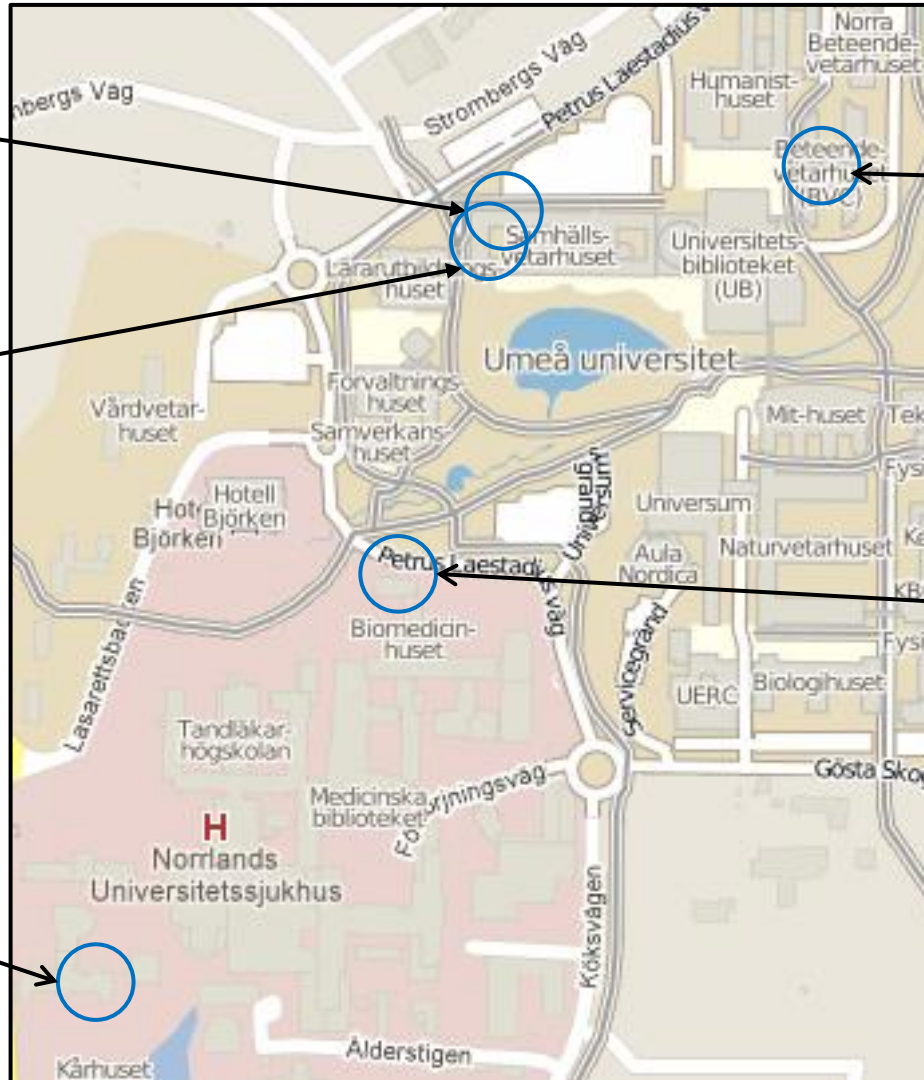
Geography and Economic History

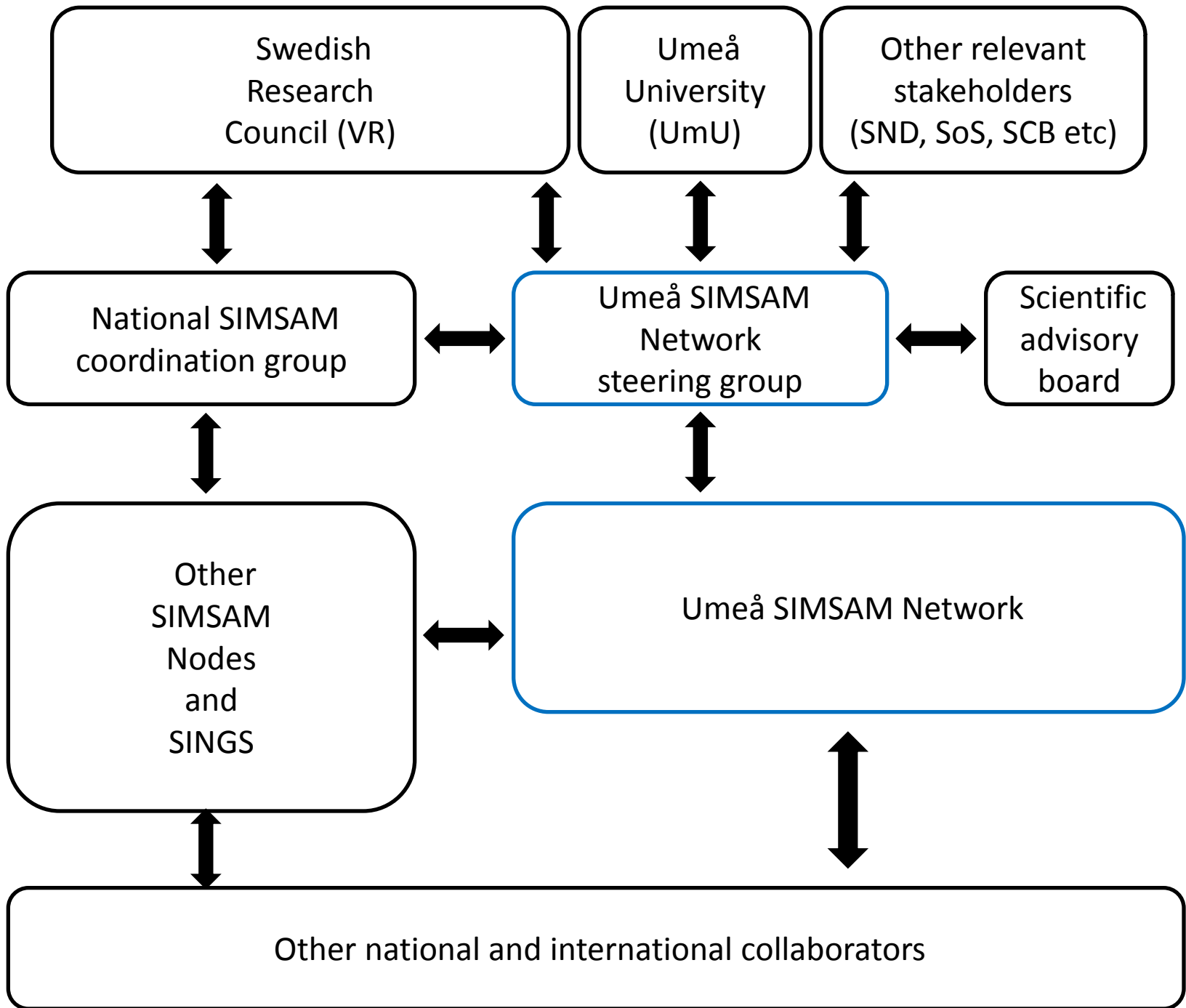
Sociology

Statistics

Occupational and Environmental Medicine

Epidemiology and Global Health





Four Research Themes in Umeå

Social and environmental
determinants throughout
the life course (1)

Asthma
Allergies
Coeliac disease
Diabetes
Psoriasis

Childhood and
life-long health
and welfare

Childhood
diseases in a social
context (2)

Monitoring,
aetiological studies,
and evaluation of
interventions (3)

Development of statistical methods for microdata research (4)

Register Holders and Registers

- Västerbottens County Council (VLL)
 - Salut database (Child Health Intervention Program)
 - VHU database (Vb Hälsoundersökning/ Vb Intervention Program)
 - Injury database
- Umeå University
 - National incidence register of coeliac disease
- Statistics Sweden (SCB)
 - Demography, education, employment, income
- National Board for Health and Welfare (SoS)
 - Medical birth register
 - Patient register
 - Pharmaceutical register



Staff Search

The Umeå SIMSAM Network/ About us

The Umeå SIMSAM Network

► About us

Organization

Network members

Steering group

International advisory group

Contact information

Research program and progress reports

Guest Research Program

Activities

Newsletter

Publications

Supporting organizations

Press

Links

National coordination group

National SIMSAM Vision and Goals

About the Umeå SIMSAM Network

The Umeå SIMSAM Network strives to become a nationally and internationally renowned centre of excellence on microdata research on childhood for lifelong health and welfare combining social and medical sciences. Linking data from several register sources will enable analyses which in a unique way will elucidate the importance of childhood for the health and welfare of individuals in a life course and multi-generation perspective.

Within our network of approximately 40 researchers including senior researchers, guest researchers, post docs and PhD students we apply an interdisciplinary approach to register-based research bringing together scientists from various parts of the social and medical sciences such as: Public Health and Clinical Medicine, Division of Epidemiology and Global Health and the Division of Occupational and Environmental Medicine; Geography and Economic History; Sociology and Statistics. In addition, we have a wide-spread net of collaborators both nationally and internationally.

Our research is focused on the four themes below.

Theme 1 – Social and environmental determinants of child health and welfare throughout the life course.

Theme 2 – Childhood diseases in a social context.

Theme 3 – The Salut programme: monitoring, aetiological studies and evaluation.

Theme 4 – Development of modern statistical methods for microdata research.

If you are interested in our activities, future collaboration and/or to obtain our newsletter, please do not hesitate to contact our network coordinator Anna Holmström (anna.holmstrom@epiph.umu.se, +46 90 785 2732).

SIMSAM Info and Contacts

➤ Network coordinator

Anna Holmström

090-7852732, 070-8188814

anna.holmstrom@epiph.umu.se

➤ National SIMSAM Network <http://simsam.nu/>

➤ Umeå SIMSAM Network www.simsam.org.umu.se

SIMSAM

