

SIMSAM



The National SIMSAM Network

Anna Holmström

SIMSAM Network Coordinator

Occupational and Environmental Medicine

Department of Laboratory Medicine

Lund University

(stationed at Umeå University: anna.holmstrom@umu.se)

What is

SIMSAM



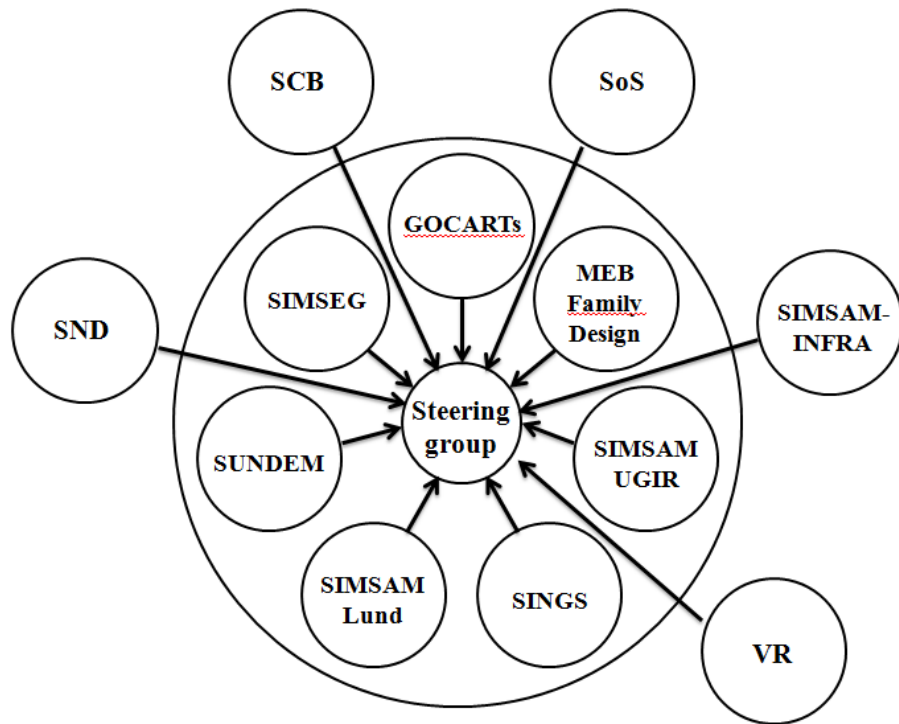
?

- Network of 6 research nodes + 1 graduate school
- **S**wedish **I**nitiative for Research on **M**icrodata in the **S**ocial **A**nd **M**edical Sciences
- The Swedish Research Council (VR): 27 million SEK/y in two 5y periods

Period 2: Jan 2014 – Dec 2018		
Nodes	GOCARTs	University of Gothenburg
	SIMSAM Lund	Lund University
	SIMSAM MEB Family Design	Karolinska Institutet
	SIMSAM UGIR	Karolinska Institutet
	SIMSEG	Linköping University
	SUNDEM	Stockholm University
Graduate school	SINGS	Karolinska Institutet

- Create internationally leading research community for register-based research

Steering group + Scientific Advisory Board



Irma Elo
University of
Pennsylvania, US



Robert Erikson
Stockholm University



Elsebeth Lynge
Copenhagen University
Denmark



www.simsam.nu

- News posts (subscription box)
- Events
- About
- Code sharing/data mgmnt
- News archive
- Publications
- Links



SIMSAM

Events About Network nodes SINGS grad school SIMSAM-INFRA Code sharing News archive Publications Links

News posts

[Course on "Advanced survival models for correlated data" at KI](#)
24-25 October, registration deadline 10 October
2016/09/28

[Open house for researchers at SoS Registerservice 28 November](#)
2016/09/23

[Two new docents in register-based research](#)
2016/09/14

[NordMAN initiative aims to facilitate researcher's access to cross-Nordic microdata](#)
2016/08/26

[Deadlines etc. for the open national SIMSAM meeting](#)
161012-13: registration 19 Sept, hotel rooms 10 Sept
2016/08/25

SIMSAM is short for "Swedish Initiative for Research on *Microdata in the Social And Medical Sciences*", an initiative supported by the Swedish Research Council. By giving priority to interdisciplinary, innovative register-based research, SIMSAM will contribute to better public health and increased knowledge of social issues – such as which factors in childhood result in increased risk for obesity or cancer later in life. The initiative also aims to promote improved and expanded use of registers in research and to share lessons learned. The SIMSAM network of 2014-2018 consists of six research nodes and one graduate school.

A short film describing the value of registers for research purposes can be accessed by clicking on the image below (interviews with Hans-Olov Adami and Juleen Zierath).



UPCOMING EVENTS

OCT 12 Wed	12:00 Open national SIMSAM meeting 2016 @ Visualiseringscenter C
OCT 13 Thu	13:30 Steering group meeting @ Linköping University, Utsikten
DEC 14 Wed	13:00 Steering group meeting @ Telephone meeting
SEP 13 Wed	12:00 NordicEpi2017 @ Lund

[Sitemap](#)

Search

SUBSCRIBE TO NEWS UPDATES

Your email

Enter email address...

[Subscribe](#)

SIMSAM activities

- Dialogue with SoS and SCB – facilitate scientist's access to data
- Information booklet – importance of register-based research
- Responded to SOU 2014:45, Westerberg evaluation rel. to reg-bas res.
- SIMSAM knowledge/infrastructure => researchers
- Workshop at Medicinska riksstämman 151203
- Annual open national meetings
- Node/SINGS-specific workshops/activities
- Supplement to Scandinavian Journal of Public Health
- NordicEpi 2017: 13-15 September in Lund



GOCARTs (GU)



➤ **G**Othenburgh **C**ardiovascular **R**egis**T**ry **S**tudies

PI Annika Rosengren / Dept. of Molecular and Clinical Medicine, Sahlgrenska Academy

➤ Clinical research + cardiovascular epidemiology => unique platform for register-based research in cardiovascular diseases (CVD) and diabetes

➤ **New insights into clinical presentation, social distribution, management, complication rate and prognosis in various manifestations of CVD:**

▪ coronary heart disease, stroke, heart failure, grown-up congenital heart disease (GUCH), diabetes

➤ 40 members

➤ Strong research environment: medicine, statistics, social sciences, health economics

SIMSAM Lund (LU)



- **Interdisciplinary research on early life exposures in a life course perspective**
PI Anna Rignell-Hydbom / Division of Occupational and Environmental Medicine (OEM, LU)
+ Centre for Economic Demography (CED, LU) + Centre for Health Equity Studies (CHES, SU/KI)
- **Study determinants of health during early life and their contribution to educational success, active working life, and healthy aging using Swedish microdata.**
- Contribute to the development of new methods to analyze register data in a life course perspective.
- Promote infrastructure for research based on registries, biobanks and surveys and via: courses, seminars, webpage - advice on data access, a study advisory board directed towards young researchers and their supervisors



SIMSAM MEB Family Design (KI)



- **Unique registers and advanced family designs to address causes and consequences of common childhood disorders**

PI Catarina Almqvist Malmros / Dept. of Medical Epidemiology and Biostatistics



- Studies on early causes and later consequences of childhood disorders

- using large, longitudinal using unique and novel registers
- designs account for familial confounding

- **Develops efficient statistical methods to address causal effects using genetically informed population based register data**

- Advanced family designs: within twin/sibling/cousin and within-individual designs

- Results will inform prevention and intervention efforts to reduce impairment and societal costs

SIMSAM UGIR (KI) (Upper Gastrointestinal Research)



- **Registry-based research of three associated public health concerns: upper gastrointestinal cancer, reflux and obesity**

PI Jesper Lagergren / Dept. of Molecular Medicine and Surgery



- Upper gastrointestinal tract: oesophagus, stomach, pancreas, liver and bile ducts, reflux = heartburn (halsbränna)
- **Aim: longer life, reduced morbidity, better quality of life from these diseases or treatment.**
- Strong clinical profile, 40 members, two co-located research groups

SIMSEG (LiU)



➤ **Dynamics of School Segregation**

PI Peter Hedström / The Institute for Analytical Sociology



➤ Improve understanding of causes + consequences of school segregation

➤ **Combining advanced statistical analyses of Swedish register data + large-scale agent-based simulation techniques**

=> understand how large numbers of individuals, in interaction with one another
=> school environments segregated along various dimensions.

➤ Highly interdisciplinary: social scientists, computer scientists, visualization experts, and applied mathematicians.

SUNDEM (SU)



➤ **Stockholm University SIMSAM Node on Demographic Research**

PI Gunnar Andersson / Demography Unit (SUDA) of Dept. of Sociology, Dept. of Human Geography

➤ SU expertise on migration and family dynamics + Nordic/European register researchers

➤ Goal: produce research exploits unique qualities of register data

➤ **5 main themes:**

- 1) **Spatial careers**
- 2) **Intergenerational demographic careers**
- 3) **Immigrant demographic integration**
- 4) **Interrelated demographic processes**
- 5) **Research based on new household and dwelling data**

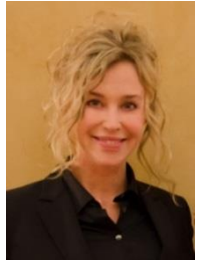


SINGS Graduate School (KI)



➤ **Swedish Interdisciplinary Graduate School in register-based research**

PI Anita Berglund / Institute of Environmental Medicine, Unit of Cardiovascular Epidemiology

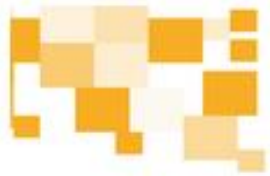


➤ **Truly interdisciplinary** – different quantitative disciplines & educational background

- Theoretical, applied, methodological & practical perspectives, ethical & legal aspects
- Core courses, a variety of elective courses, retreats, workshops and seminars
- Increase cross-fertilisation & mutual understanding, stimulate collaboration

➤ **Steering group:** SIMSAM nodes + other research groups

➤ **PhD-students:** SIMSAM & other research environments, 5 cohorts, appr. 25 each



NORDICEPI

Lund, Sweden, September 13-15 2017



Health and demographic inequalities

Effects of socioeconomic inequalities during the life course
Socioeconomic determinants of health
Inequalities in access and use of health care
Socioeconomic consequences of illness
Geographical differences in environmental exposures and health

Early life and intergenerational studies

Early life and intergenerational determinants of later life outcomes
Effects of environmental exposures early in life
Family structure and health

Methodological issues in register-based research

Causal inference from observational data
Life course studies and family based designs
Current trends in methodology in register-based research
Population-based cohorts – current trends, methods and infrastructure

8th Nordic Meeting in Epidemiology and Register-Based Research

Nordic cooperation on register research + infrastructure

Cross-border co-operations in the Nordic countries: topics, methods and data exchange
Cross-border comparative studies
Fertility differences and reproductive health in the Nordic countries
Immigration and public health in the Nordic countries

Miscellaneous

Current trends in cancer epidemiology
Epidemiologic transition
Health and welfare aspects of population ageing
Pharmacoepidemiology

www.nordicepi2017.com